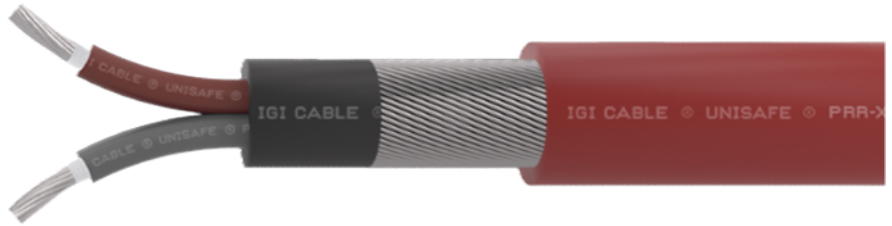


IGI CABLE

UNISAFE® PRR-X ARMoured

2 CORE x 1.5 SQMM



SR. NO.	PARAMETER	UNIT	SPECIFICATION
1	CONSTRUCTION	DESCRIPTION	(CONDUCTOR + 2 x TAPE + XLPE) x 2 + TAPE + LSZH + ARMOUR + LSZH
2	CABLE SIZE	CORE X SQ. MM.	2C X 1.5
3	CONDUCTOR	-	ANNEALED BARE COPPER
4	NO. OF STRANDS / CORE	NOS	7
5	DIAMETER OF STRAND	MM	0.53
6	DIAMETER OF CONDUCTOR	MM	1.6
7	TAPE ON CORE	--	GLASS MICA TAPE
8	INSULATION OF CORE	--	XLPE
9	THICKNESS OF INSULATION	MM	0.7
10	NOMINAL DIAMETER OF CORE	MM	3.7
11	COLOURS OF CORE	--	RED / BLACK
12	TAPE	--	POLY-AL TAPE
13	INSULATION OF INNER SHEATH	--	ZHFRLS (ZERO HALOGEN)
14	THICKNESS OF INNER SHEATH	MM	0.8
15	ARMOURING	--	G. I. WIRE WITH 0.9 MM AS PER IS 3975
16	INSULATION OF OUTER SHEATH	--	ZHFRLS (ZERO HALOGEN)
17	THICKNESS OF OUTER SHEATH	MM	1.4
18	COLOUR OF OUTER SHEATH	--	RED
19	NOMINAL OVERALL DIAMATER	MM	13.5 ± 1
20	STANDARDS APPLICABLE	--	BS 7846, BS 7629, 180 MINS FIRE SURVIVAL COMPLYING WITH BS 6387
21	CONDUCTOR RESISTANCE AT 20° C	OHM/KM	12.1
22	INSULATION RESISTANCE AT 20° C	MEGA OHM/KM	100
23	TEST VOLTAGES (AC)	KV FOR 1 MIN	1.5 KV BETWEEN 2 CORES 1 KV BETWEEN CORES AND SHIELDS

NOTES :

NON CONTACT MEASURING EQUIPMENT WILL BE USED FOR MEASURING OD.

TOLERANCE ON COPPER WIRE IS +/- 0.005 MM

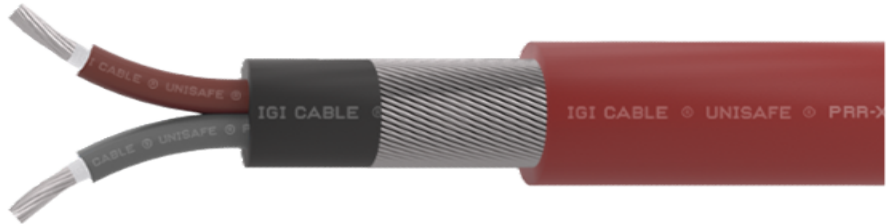
TOLERANCE ON INSULATION THICKNESS IS +/- 0.1 MM

ORDER WILL BE ACCEPTED AGAINST CATALOGUE NUMBER PROVIDED.

IGI CABLE

UNISAFE® PRR-X ARMOURED

2 CORE x 2.5 SQMM



SR. NO.	PARAMETER	UNIT	SPECIFICATION
1	CONSTRUCTION	DESCRIPTION	(CONDUCTOR + 2 x TAPE + XLPE) x 2 + TAPE + LSZH + ARMOUR + LSZH
2	CABLE SIZE	CORE X SQ. MM.	2C X 2.5
3	CONDUCTOR	-	ANNEALED BARE COPPER
4	NO. OF STRANDS / CORE	NOS	7
5	DIAMETER OF STRAND	MM	0.67
6	DIAMETER OF CONDUCTOR	MM	2
7	TAPE ON CORE	--	GLASS MICA TAPE
8	INSULATION OF CORE	--	XLPE
9	THICKNESS OF INSULATION	MM	0.7
10	NOMINAL DIAMETER OF CORE	MM	4.5
11	COLOURS OF CORE	--	RED / BLACK
12	TAPE	--	POLY-AL TAPE
13	INSULATION OF INNER SHEATH	--	ZHFRLS (ZERO HALOGEN)
14	THICKNESS OF INNER SHEATH	MM	0.8
15	ARMOURING	--	G. I. WIRE WITH 0.9 MM AS PER IS 3975
16	INSULATION OF OUTER SHEATH	--	ZHFRLS (ZERO HALOGEN)
17	THICKNESS OF OUTER SHEATH	MM	1.4
18	COLOUR OF OUTER SHEATH	--	RED
19	NOMINAL OVERALL DIAMATER	MM	14.3 ± 1
20	STANDARDS APPLICABLE	--	BS 7846, BS 7629, 180 MINS FIRE SURVIVAL COMPLYING WITH BS 6387
21	CONDUCTOR RESISTANCE AT 20° C	OHM/KM	7.41
22	INSULATION RESISTANCE AT 20° C	MEGA OHM/KM	100
23	TEST VOLTAGES (AC)	KV FOR 1 MIN	1.5 KV BETWEEN 2 CORES 1 KV BETWEEN CORES AND SHIELDS

NOTES :

NON CONTACT MEASURING EQUIPMENT WILL BE USED FOR MEASURING OD.

TOLERANCE ON COPPER WIRE IS +/- 0.005 MM

TOLERANCE ON INSULATION THICKNESS IS +/- 0.1 MM

ORDER WILL BE ACCEPTED AGAINST CATALOGUE NUMBER PROVIDED.